



INTERNATIONAL
A ROCHA
Conservation and Hope

Faith in the Forest
the enjoyments and
challenges of working for an
environmental
Christian organisation

Nicholas Warren
Conservation Projects Manager



PORTUGAL
A ROCHA
Crer, Cuidar e Transformar

A Rocha was founded in 1983, and work was initially based in the Portuguese Algarve, where the first field study centre opened in 1986.

A Rocha is Portuguese for 'The Rock'.

The founders, Peter and Miranda Harris, created a Christian conservation organisation to give practical expression to two convictions:

- it is a completely normal part of the Christian life to care for the environment;
- values, beliefs are too seldom talked about when in fact they are fundamental.



Photo: Benjamin
Cowburn

KENYA

A ROCHA

Conservation and Hope

A Rocha's modus operandi is based on five guiding principles:

- Christian,
- Conservation,
- Community,
- Cooperation, and
- Cross-Cultural

UK A ROCHA

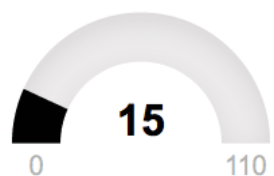
Caring for God's Earth

Eco Church's vision is to create a vast network of churches across England and Wales which care for the environment.

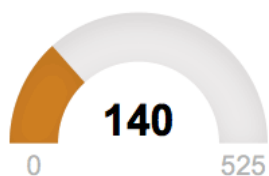
A Rocha UK runs Eco Church: an award scheme for churches in England and Wales at Bronze, Silver and Gold level. The scheme suggests ways to express care for God's world through worship, teaching, lifestyle changes and community engagement.

Eco Church Award Points

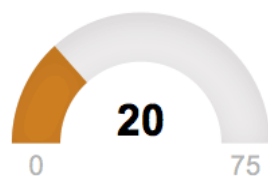
Worship and Teaching



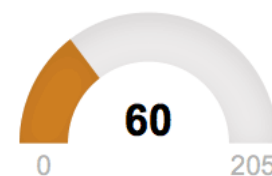
Buildings



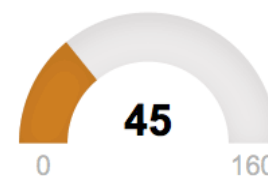
Land



Community and Global

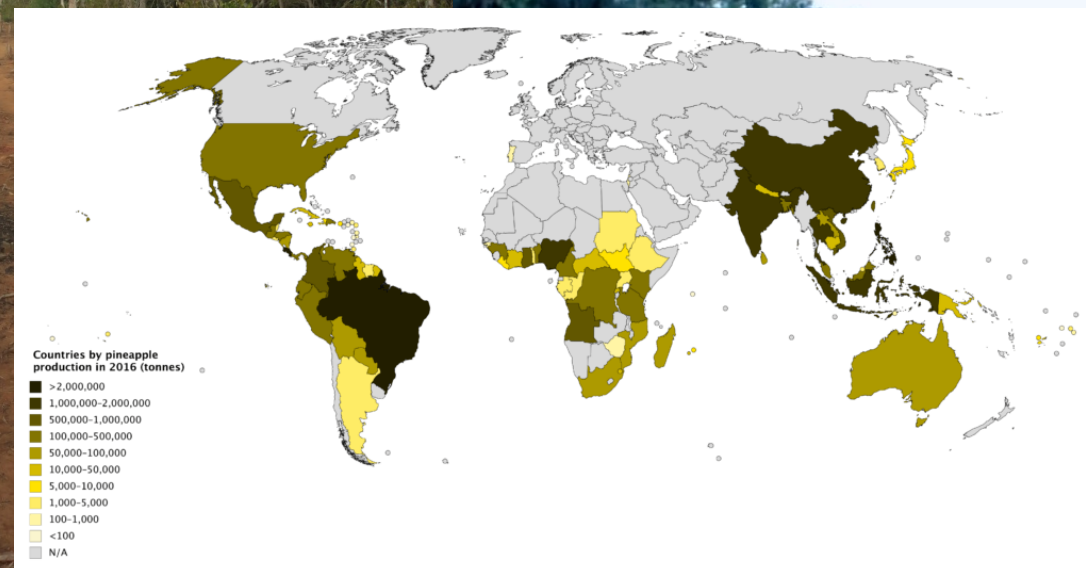
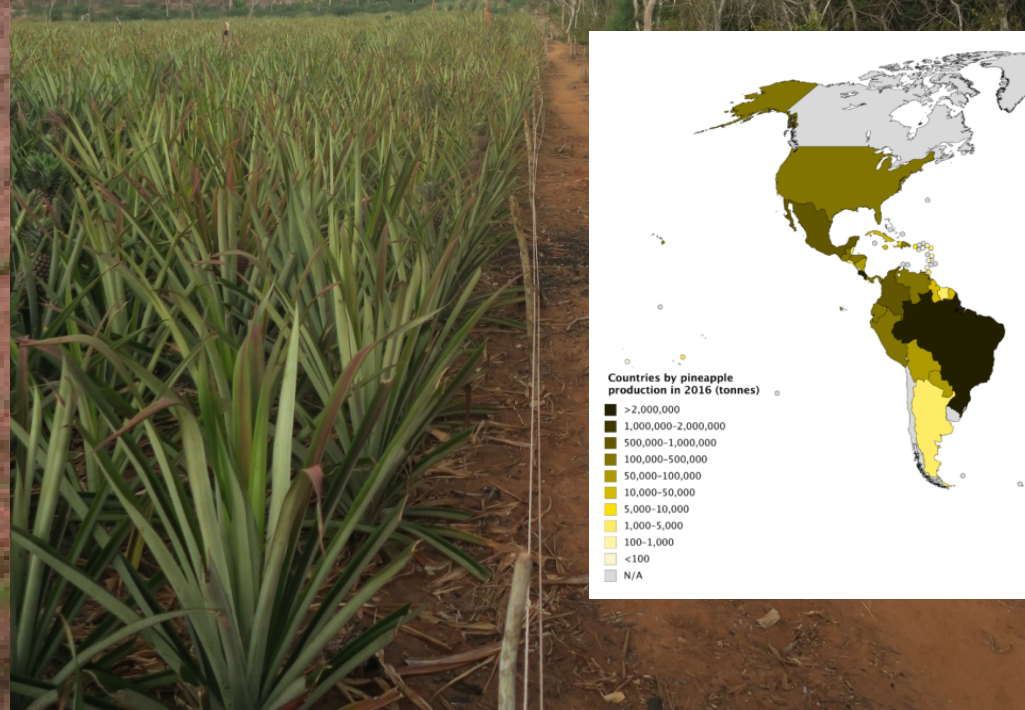


Lifestyle





Our forest conservation work across Africa is a witness to the incredible pressure the environment is currently under globally.

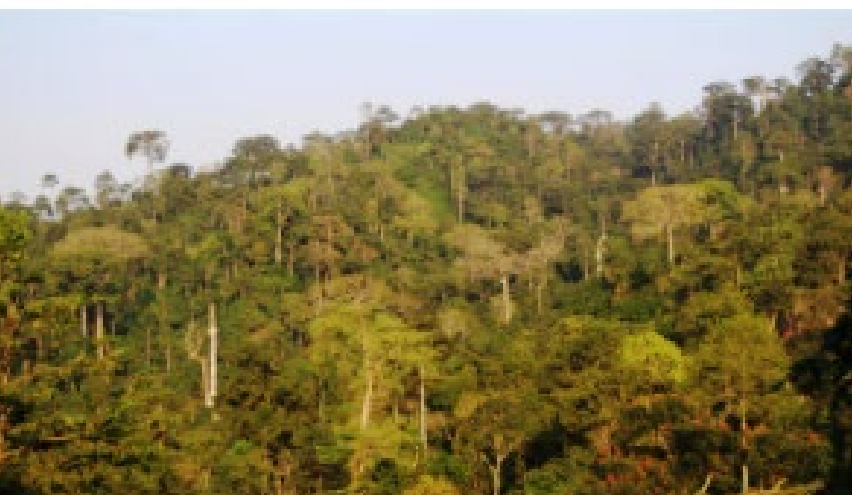




THE ECONOMICS OF THE ATEWA FOREST RANGE, GHANA



A Rocha International with 10,368 supporters



Petitioning President of the Republic of Ghana His Excellency Nana Addo Dankwa Akufo-Addo

Atewa Forest for National Park – not mining

(Español • français • português) The Government of Ghana must declare Atewa Forest a National Park, to protect it from...

Read more

change.org



Leonardo DiCaprio
@LeoDiCaprio

Ghana's #Atewa Forest Reserve provides drinking water to 5 million+ people & harbors 100+ wildlife species at risk of extinction. We must prioritize the protection of these irreplaceable places for a healthy planet. wapo.st/2oDUBFi @arochaghana #SaveAtewaForestNow



Mining Ghana's bauxite would bring in billions from China. Bu...
Ghana's government has faced significant backlash over the proposal.
[washingtonpost.com](https://www.washingtonpost.com)

6,731 5:06 PM - Nov 12, 2019

3,195 people are talking about this

GHANA A ROCHA

Caring for God's Creation

A Rocha Ghana is at the heart of the International campaign to save the Atewa forest

Legend

- Atewa Range Forest Reserve
- Atewa Range
- River





*Picture used with
permission*

Faith in the Forest: Exploring the Role of Faith-Based Relationships in the Conservation of the Dakatcha Woodland, Kenya

By Peter Rowe

Background and Research Questions



Three bodies of literature informed this research:

- Faith-based development- understudied^{1,2,3}
- Faith-based conservation- underutilised^{4,5}
- Relationships in conservation/development work- underappreciated⁶

From these three literatures, three questions:

- How do faith-based relationships between A Rocha Kenya (ARK) and churches/communities **materialise**?
- How are faith-based relationships between ARK and churches/communities **maintained**?
- How are faith-based relationships between ARK and churches/communities **mobilised**?

Materialisation, Maintenance, Mobilisation



Picture used with
permission

Materialisation

- Proximity and Diversity
- ARK staff emphasised the importance of “presenting ourselves as brothers and sisters in Christ” and wanting to “share with you what God has put in our hearts”⁷

Maintenance

- Sermon series, Bible study, “friendship work”⁸
- Relationships or *friendships*?

Mobilisation

- Short-term: Farming God’s Way (FGW)
- Long-term: Christian conservation ethic

“Converse” Expectations in the Dakatcha Woodland



Picture used with permission

“the community knows us, they don’t know the donor... they see us as the donor, the person with the money, and they also have their own expectations of the NGO [ARK]. So... sometimes you get into a place where the expectations of the donor and the expectations of the ... community, are completely converse...”⁷

- Integrated conservation and development programmes often come with a material benefit (e.g. PES⁹, safari contracts¹⁰)
- However, this is counterposed to the mission of the ARK, who endeavor to promote FGW as a means of ultimately conserving the Dakatcha Woodland, an act which should be done out of reverence for God’s creation¹¹

Challenges and Future Research



Picture used with permission

Challenges:

- Trying not to render technical the process of relationship building¹²
- Positionality and Neutrality-
“... be involved or perish”¹³

Future Research:

- Interviews with individual participants and communities of faith
- Expectations and decision making in faith-based conservation and development

References

- 1- Deneulin, S., 2013. Christianity and international development. In *Handbook of Research on Development and Religion*, pp. 51-65. Edward Elgar Publishing Ltd.
- 2- Clarke, M. and Ware, V.A., 2015. Understanding faith-based organizations: How FBOs are contrasted with NGOs in international development literature. *Progress in Development Studies*, 15(1), pp.37-48.
- 3- Bompani, B., 2019. Religion and development: Tracing the trajectories of an evolving sub-discipline. *Progress in Development Studies*, pp. 171-185.
- 4- Sluka, R.D., Kaonga, M., Weatherley, J., Anand, V., Bosu, D. and Jackson, C., 2011. Christians, biodiversity conservation and poverty alleviation: a potential synergy?. *Biodiversity*, 12(2), pp.108-115.
- 5- Moyer, J.M., 2015. Faith-Based Sustainability in Practice: Case Studies from Kenya. *Journal for the Study of Religion, Nature & Culture*, 9(1).
- 6- Eyben, R., 2006. *Relationships for aid*. Earthscan.
- 7- Interview 4 (2019) Interviewed by: Peter Rowe. 11 June 2019.
- 8- Girgis, M., 2007. The capacity-building paradox: using friendship to build capacity in the South. *Development in Practice*, 17(3), pp.353-366.
- 9- Massarella, K., Sallu, S.M., Ensor, J.E. and Marchant, R., 2018. REDD+, hype, hope and disappointment: The dynamics of expectations in conservation and development pilot projects. *World Development*, 109, pp.375-385.
- 10- Ahebwa, W.M., Van der Duim, V.R. and Sandbrook, C.G., 2012. Private-community partnerships: Investigating a new approach to conservation and development in Uganda. *Conservation and Society*, 10(4), p.305.
- 11- Interview 3 (2019) Interviewed by: Peter Rowe. 10 June 2019.
- 12- Li, T.M., 2007. *The will to improve: Governmentality, development, and the practice of politics*. Duke University Press.
- 13- Okely, J., 2013. *Anthropological practice: Fieldwork and the ethnographic method*. Berg.



INDIA

ROCHA

Satoi Range

IN429

Summary

Text account

Data table and detailed info

Map

Reference and further resources

Country/territory: [India](#)

IBA Criteria met: A1, A2 (2004)

For more information about IBA criteria please click [here](#)

Area: 5,000 ha

Protection status:

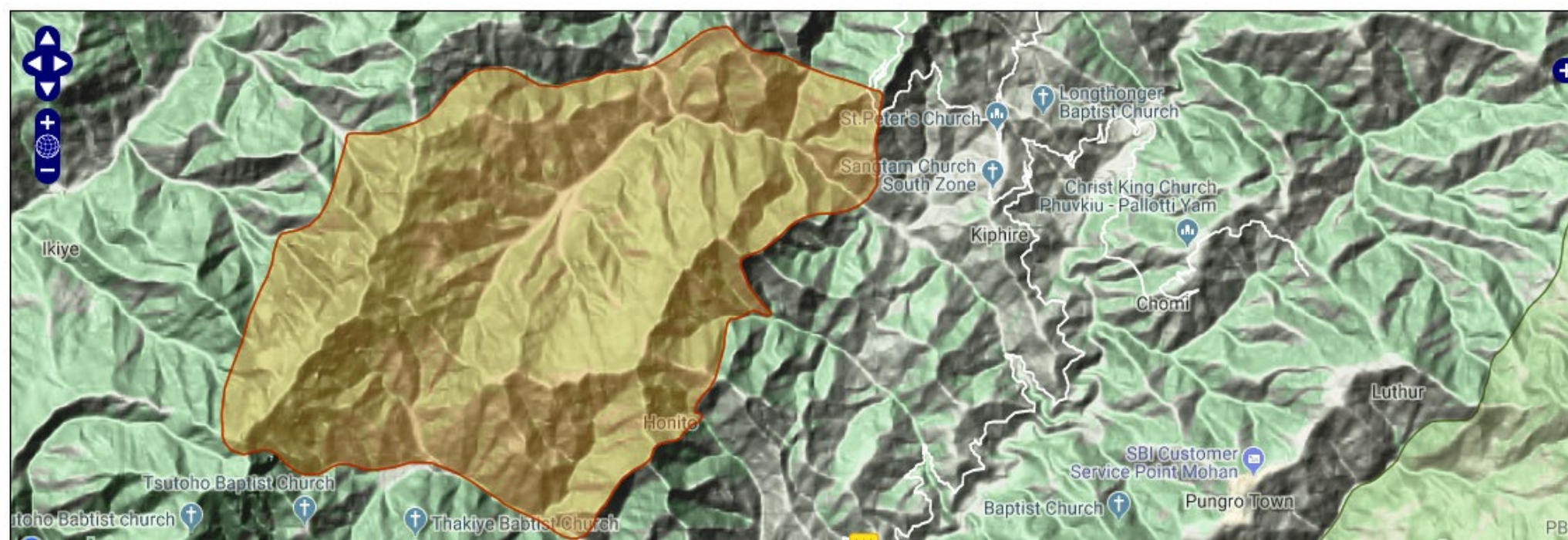
Bombay Natural History
Society



Most recent IBA monitoring assessment

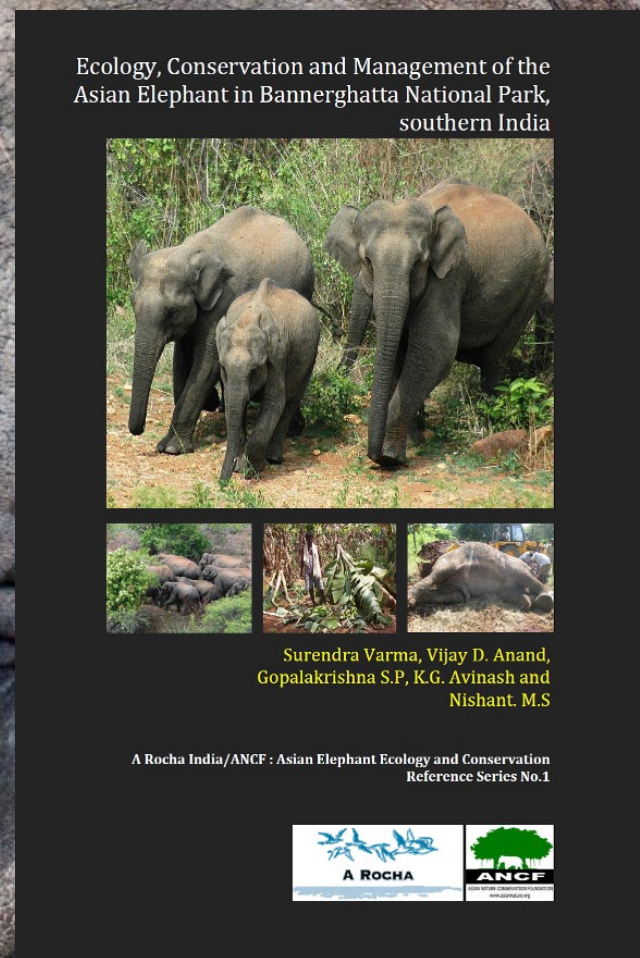
Year of assessment	Threat score (pressure)	Condition score (state)	Action score (response)
2003	high	not assessed	not assessed

For more information about IBA monitoring please click [here](#)



Geography from Global Mapping International - www.gmi.org
Data from: conservation.org and Global Mapping International.
Map produced by Anthony Catb

Evangelical data was
The people at Evangelical
each are a by product



INDIA

A ROCHA

Conservation and Hope

A Rocha responds to the global crisis of biodiversity loss through:

- Ecological monitoring and research in areas of high value for wildlife
- Practical measures for conserving and restoring habitats and their fauna and flora
- Encouraging appreciation of nature and participation in its conservation, through environmental education and community outreach
- Providing a forum for understanding the relevance of the Christian faith to environmental issues.



Climate Stewards
FOR TOMORROW TODAY