

# Edinburgh Forests and Landscapes Network

A new generation of plantations:  
Developing an 'ecosystem of collaboration'  
to make a positive impact for people and nature

Andrew Heald, iNovaland

with panellists

Dr Louise Sing, Planning Forester, Forestry and Lands Scotland  
Charles Dundas, Chief Executive, The Borders Forest Trust

3 April 2024

16:00 - 18:00

Training & Skills, ECCI



# TL;DR

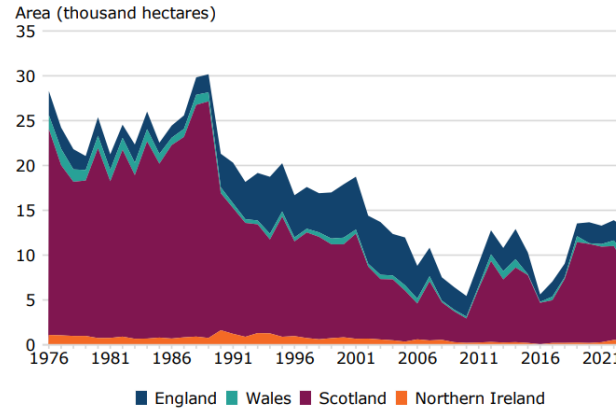
- 1 - We need to be looking and thinking about land as a whole:
  - We need a wider range of people in the room when we are discussing land use.
  - We need to be asking better questions
- 2 – We need to be thinking about 2050:
  - Water, fuel, nature, food, timber etc and work backwards from there
  - Focus more on outcomes and then discussing how we deliver those outcomes
- 
- 3 – We are in an emergency:
  - A nature and climate emergency which is creating social emergencies.
  - We need to be better at making quicker decisions & better at managing risk

“Forestry isn’t about trees – it is really about people.” Jack Westoby FAO

# UK Forestry Management



Figure 1.5 Area of new planting, UK, 1976 to 2023



Source: Forestry Commission, Forestry England, Scottish Forestry, Forestry and Land Scotland, Welsh Government, Forest Service, grant schemes.

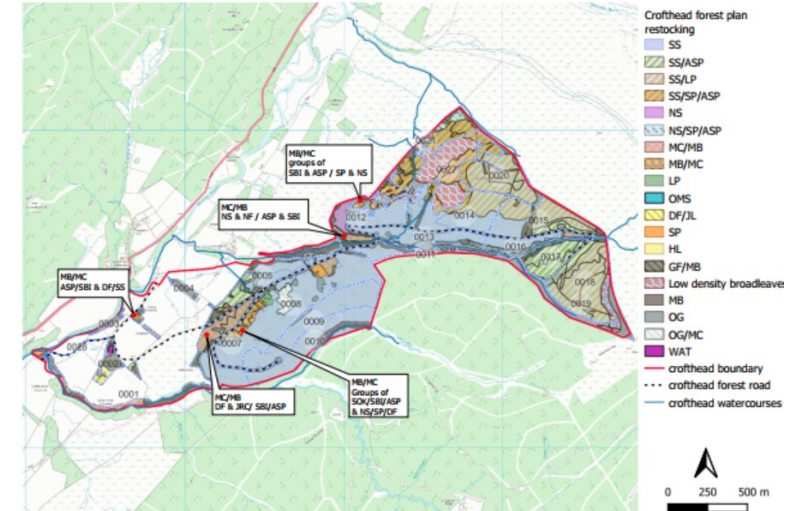


Figure 2.1 Deliveries of UK-grown softwood, UK, 1994 to 2022

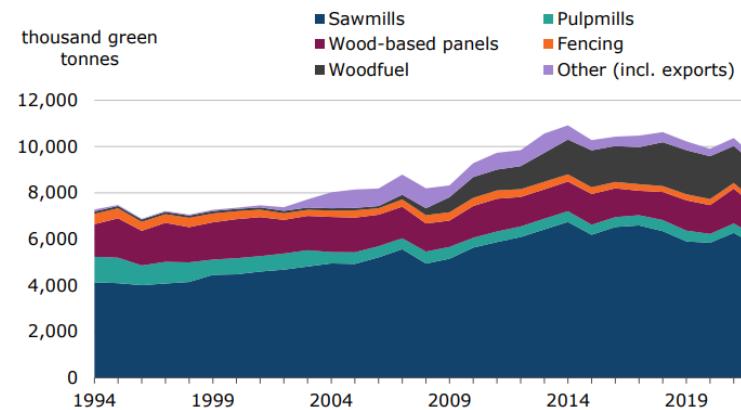
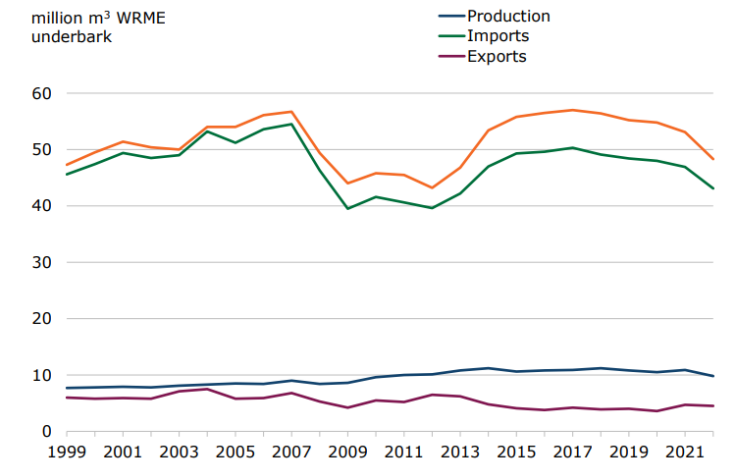


Figure 3.1 Apparent consumption of wood<sup>1</sup>, UK, 1999 to 2022





# iNovaland

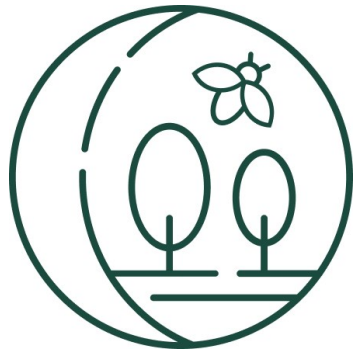
Restoring landscapes for people and planet



We are an international private organisation restoring forests and landscapes in South America and West Africa



# Our principles



## Ecosystem integrity

Maintaining and restoring ecosystem integrity



## Inclusion

Ensuring inclusion and stakeholder engagement



## Green growth

Supporting green growth, jobs and socioeconomic development

Restoring landscapes for people and planet



Atebubu and Wiase Forest Landscape Restoration project is “A ‘Living Lab’ for Community and Ecological Resilience” located in the Bono East region of Central Ghana.

The project seeks to address issues of land degradation, deforestation, nature loss, unemployment and climate change.

## Atebubu and Wiase FLR in Numbers 2023

**Natural Forest Restoration - APSD:**

**2,766,623**  
Number of trees planted

**2,146**  
ha restored<sup>1</sup>  
(in total)

**Agroforestry Programme - Community:**

**728**  
Farms newly engaged  
(1,204 overall)

**862**  
ha of agroforestry  
(1,692 ha overall)

**10**  
New communities engaged  
(23 communities overall)

**684**  
Newly engaged farmers  
(1,117 overall)

**204,374**  
Tree seedlings distributed to newly engaged farmers

**Multi-stakeholder platform (MSP):<sup>2</sup>**

**4**  
Number of MSP meetings held

**~60**  
People attending each meeting

**28 in 2023**  
Increase in the average number of women participating in MSP meetings

**88 people each day**  
Attending the three-day community engagement workshop to help co-design the carbon certification project



# FASB



FASB supports a future where people and nature live in harmony in one of the most important biodiversity hotspots on the planet.

FASB is investing in projects designed by local people that help protect and restore the environment while supporting socioeconomic development.

## FASB in Numbers

### Conservation

**Sustainable Agriculture**

**64 HA**  
Area Planted

**2,622 HA**  
Indirect Impacted Area

**70,114**  
Trees Planted

**Reforestation**

**231 HA**  
Area Planted

**272 HA**  
Indirect Impacted Area

**154,135**  
Trees Planted

### Community

**1,438**

Families  
Involved Directly  
in the Projects

**1,781**  
Families  
Indirectly  
Benefiting

**193**

Meetings  
Held

**2,651**  
Participants  
in Meetings

# Conclusion

- 1 - We need to be looking and thinking about land as a whole:
  - We need a wider range of people in the room when we are discussing land use.
  - We need to be asking better questions
- 2 – We need to be thinking about 2050:
  - Water, fuel, nature, food, timber etc and work backwards from there
  - Focus more on outcomes and then discussing how we deliver those outcomes
- 3 – We are in an emergency:
  - A nature and climate emergency which is creating social emergencies.
  - We need to be better at making quicker decisions & better at managing risk



Figure 12. Community Engagement Workshop: Forests, Carbon and Co-Benefits group photo – November 2023





# iNovaland

Restoring landscapes for people and planet

**Thank you!**

