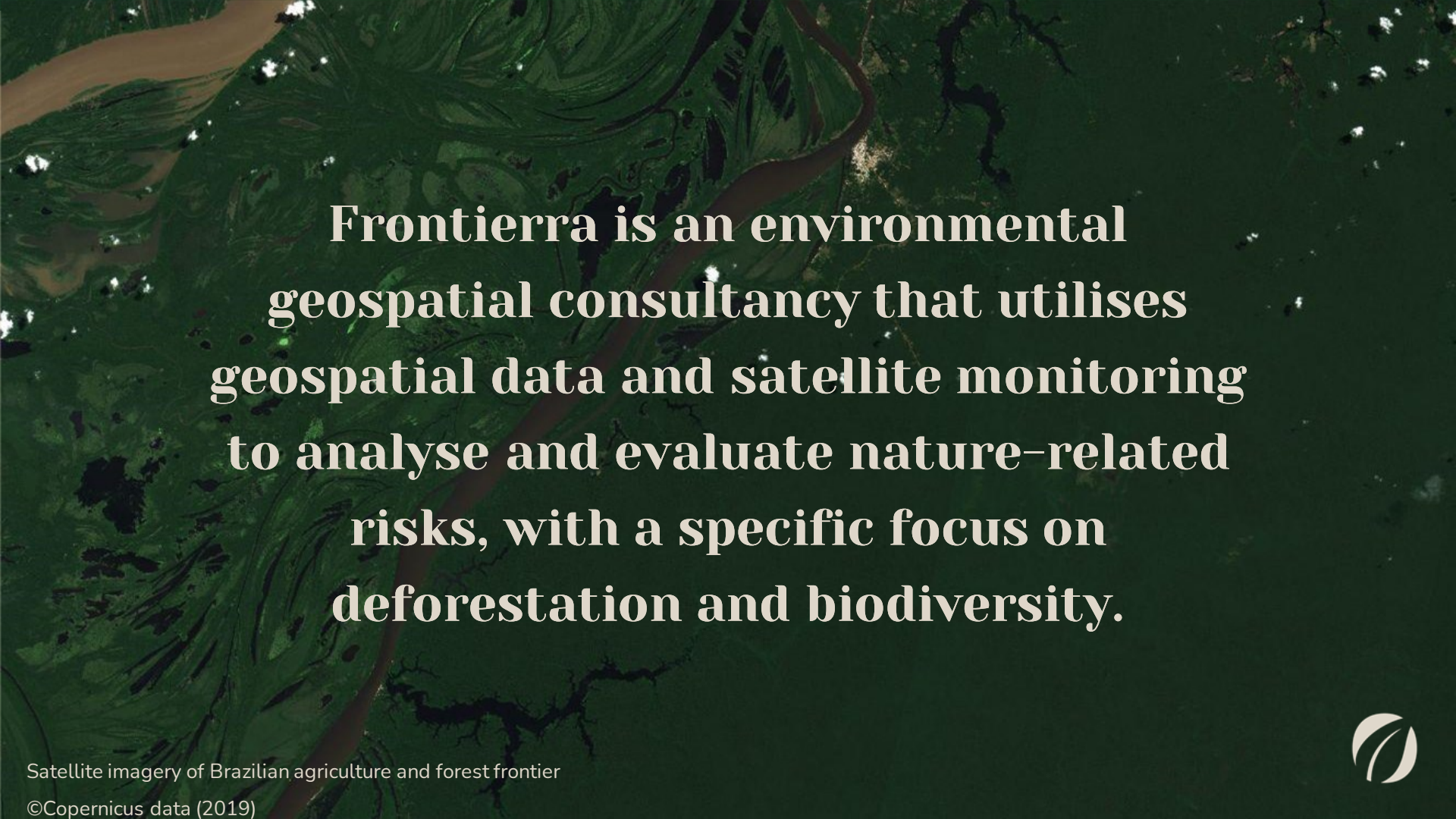




The Role of Geospatial Data in Zero-Deforestation Monitoring

Linsey Mortimer & Laura O'Brien



A satellite image of a river winding through a dense forest. The river is a light brown color, contrasting with the dark green of the forest. The forest appears to be a mix of primary and secondary forest, with some areas showing signs of deforestation or clearing. The text is overlaid on the image in a white, serif font.

**Frontierra is an environmental
geospatial consultancy that utilises
geospatial data and satellite monitoring
to analyse and evaluate nature-related
risks, with a specific focus on
deforestation and biodiversity.**



The Deforestation Problem

Approximately 420 million hectares of forest were lost between 1990 and 2020, contributing significantly to ecosystem degradation and climate change.



EU Deforestation Regulation Overview



Beef



Palm Oil



Rubber



Wood



Cocoa



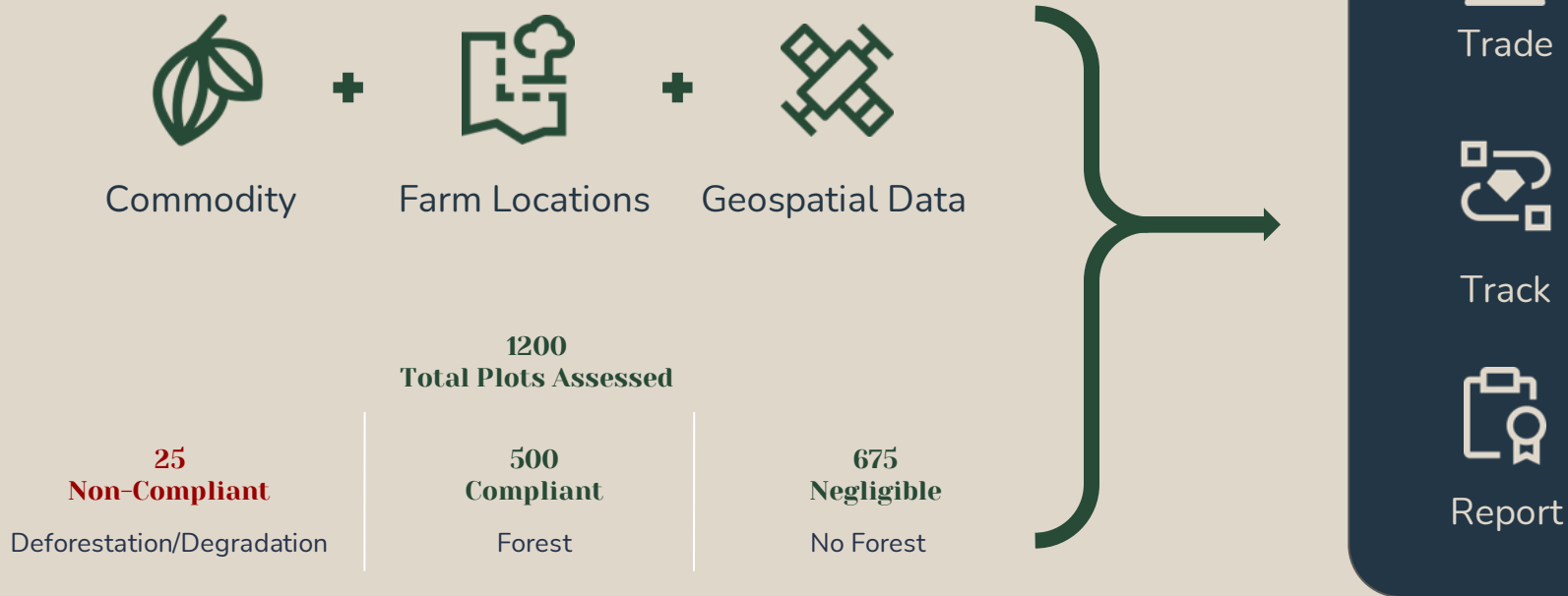
Coffee



Soy

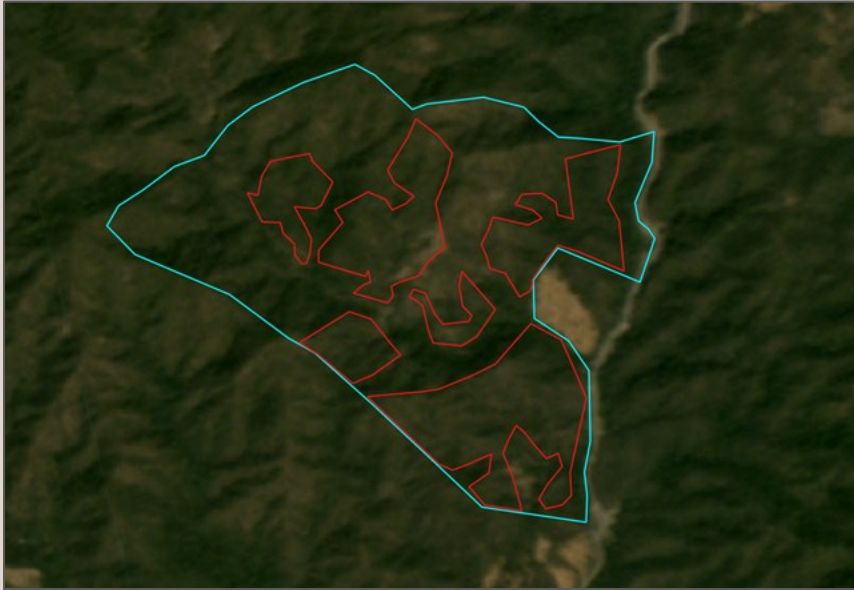


Example: Cocoa Supply Chain



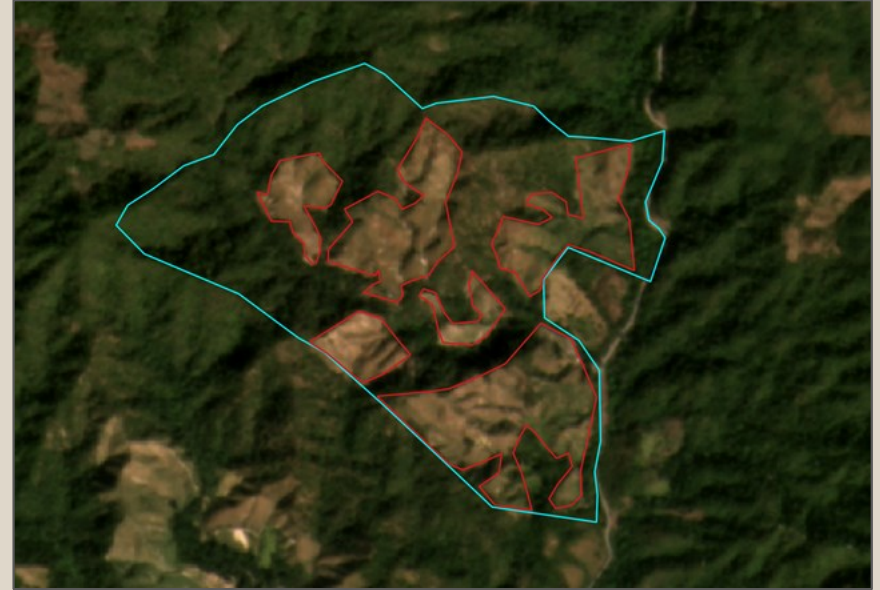
Non-Compliant example

Forest detected at baseline, deforestation and or degradation of over 0.5ha detected after the baseline.



Modified Copernicus Sentinel data (2020)

December 2020



Modified Copernicus Sentinel data (2024)

March 2024

Compliant example

Forest detected at baseline, no deforestation or degradation detected after the baseline.



Modified Copernicus Sentinel data (2020)

December 2020



Modified Copernicus Sentinel data (2024)

March 2024

Negligible example

No forest detected at baseline, (monoculture plantation or non-forest land type)



Modified Copernicus Sentinel data (2021)

January 2021



Modified Copernicus Sentinel data (2024)

April 2024

Benefits of our Approach



Integrated

Location-based integrated assessments of nature & climate



Satellite Monitoring

Geospatial data for accurately monitoring operations and supply chains



Cost Effective

Global coverage; cloud based solutions; operational efficiency; less onsite visits



Asset Location & Mapping

Understand variation in geography, for specific risk management



Scalable

Individual assets or companies to global portfolios



Report & Disclose

Align to standards; communicate with stakeholders; measure and disclose progress

Frontierra

frontierra.org

Contact Us:

[LinkedIn](#)



Linsey Mortimer



Laura O'Brien